

Extra Multiple Choice Questions

1. A beach ball has a diameter of 8 inches. What is the circumference of this ball?

- a) 4π
- b) 8π
- c) 10π
- d) 16π

$$C = \pi d$$

$$C = 8\pi$$

2. A jacket costs \$86 and has sales tax of 6.75%. What is the final cost of the jacket?

- a) \$5.81
- b) \$91.81
- c) \$80.19
- d) \$90

$$86(1.0675)$$

3. A bike is on sale for \$140. If this represents a 30% discount from the original price, what was the original price?

- a) \$98
- b) \$466.67
- c) \$200
- d) \$188

$$\frac{140}{x} = \frac{70}{100}$$

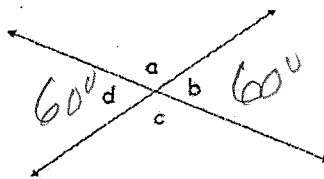
$$\frac{70x}{70} = \frac{14000}{70}$$

$$x = 200$$

4. If angle d is 60° , what is the measure of angle b ?

- a) 30°
- b) 60°
- c) 90°
- d) 120°

vertical



5. Two complementary angles are in the measure of 2:4. What is the measure of the larger angle?

- a) 15°
- b) 30°
- c) 60°
- d) 90°

$$2x + 4x = 90$$

$$\frac{6x}{6} = \frac{90}{6}$$

$$x = 15$$

$$4(15) = 60$$

6. Which expression is equivalent to $15x - 3$?

- a) $-3(5x - 1)$
- b) $3(5x - 1)$
- c) $3x(3 - 1)$
- d) $15(x - 3)$

$$3(5x - 1)$$

7. Which of the following numbers have the greatest absolute value?

A = $|-8|$ B = -2 C = 3 D = 7

- a) A
- b) B
- c) C
- d) D